

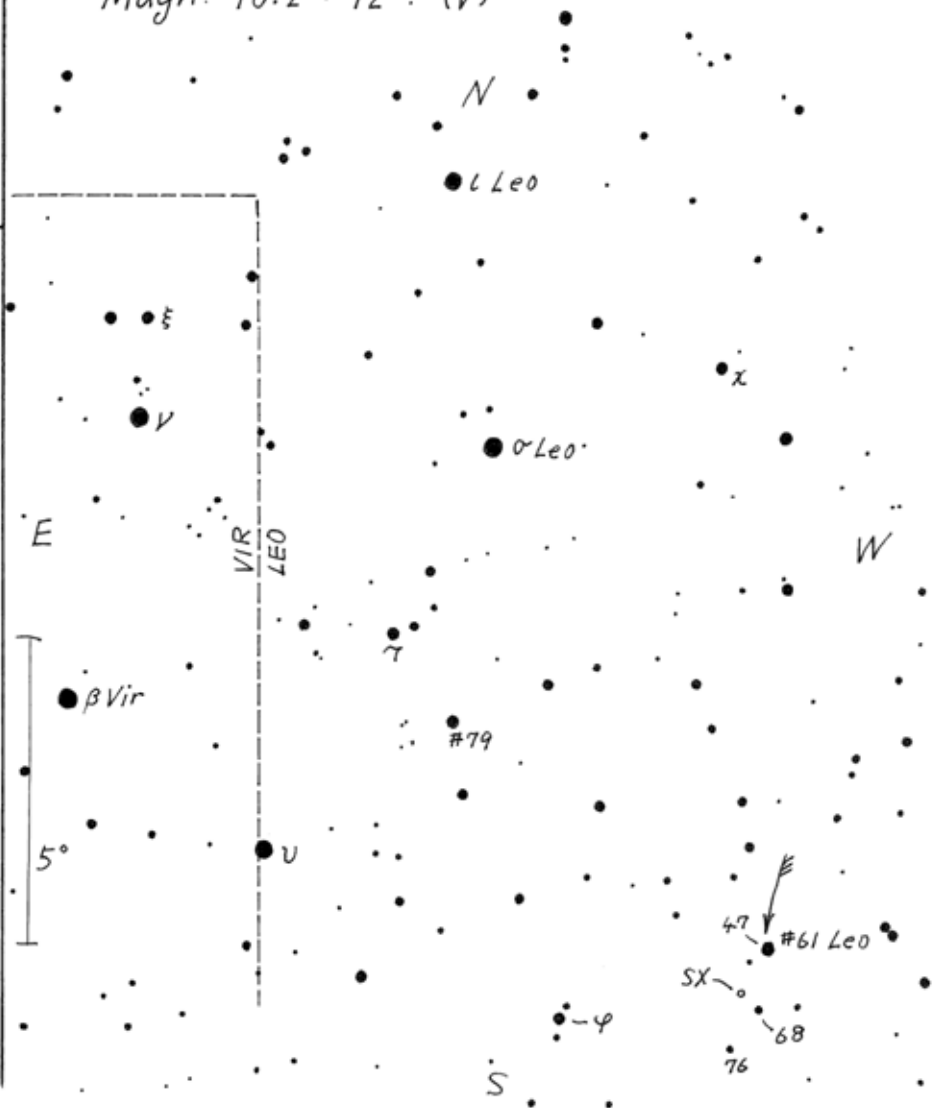
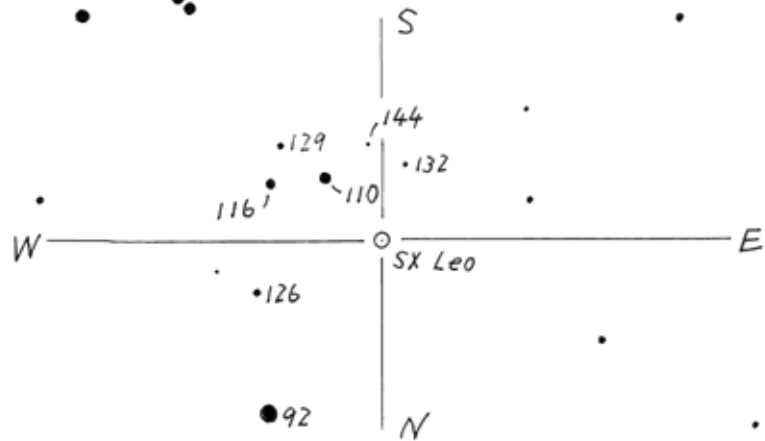
SX Leo

(2000) 11h03m39s - 03°12.1'

Type Lb Period Irr?

Magn. 10.2 ~ 12? (V)

15'



S

SX

N

W

E

1°

47 = #61 Leo

E

5°

VIR
LEO

N

ϵ Leo

σ Leo

β Vir

#79

47 #61 Leo

SX

68

76

S