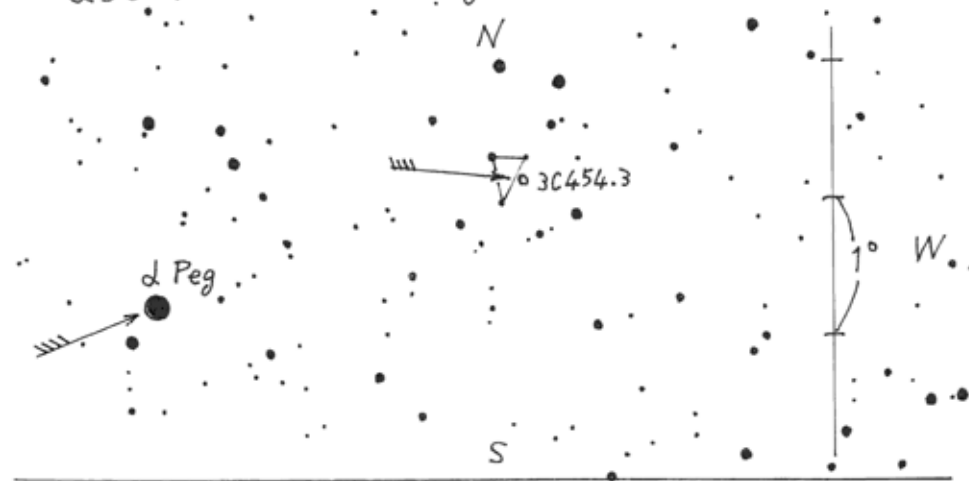
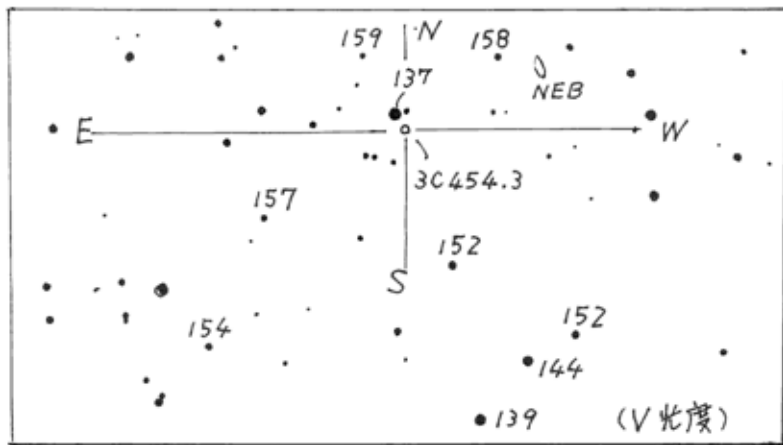
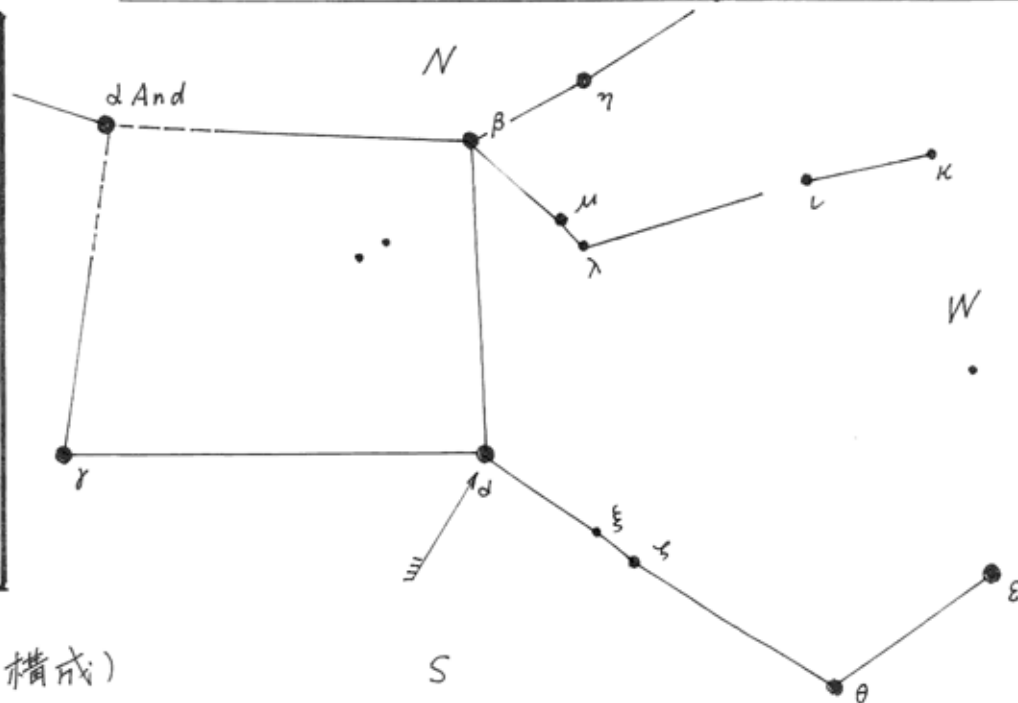
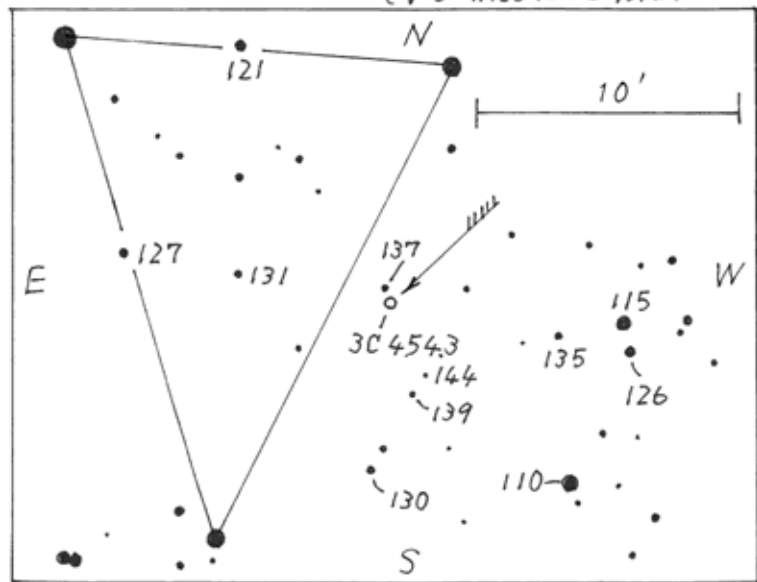


3C 454.3 (= 3CR454.3 = 2251+158)  
 (2000)  $22^{\text{h}}53^{\text{m}}58^{\text{s}} + 16^{\circ}08'54''$   
 QSO ( $z=0.859$ ) Magn. ? ~ 16.1 V



(V & TASSによる光度)



(日本変光星研究会の図により構成)