

1934 + 49 R Cyg (R Cygni)

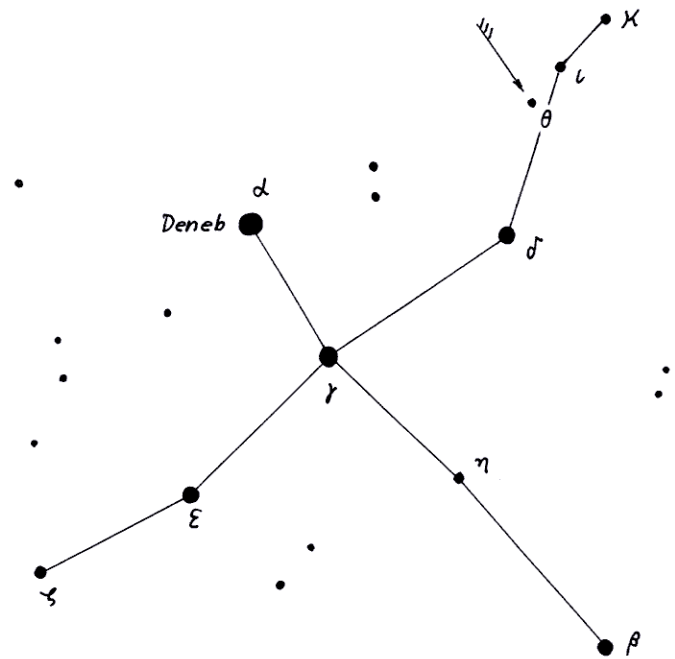
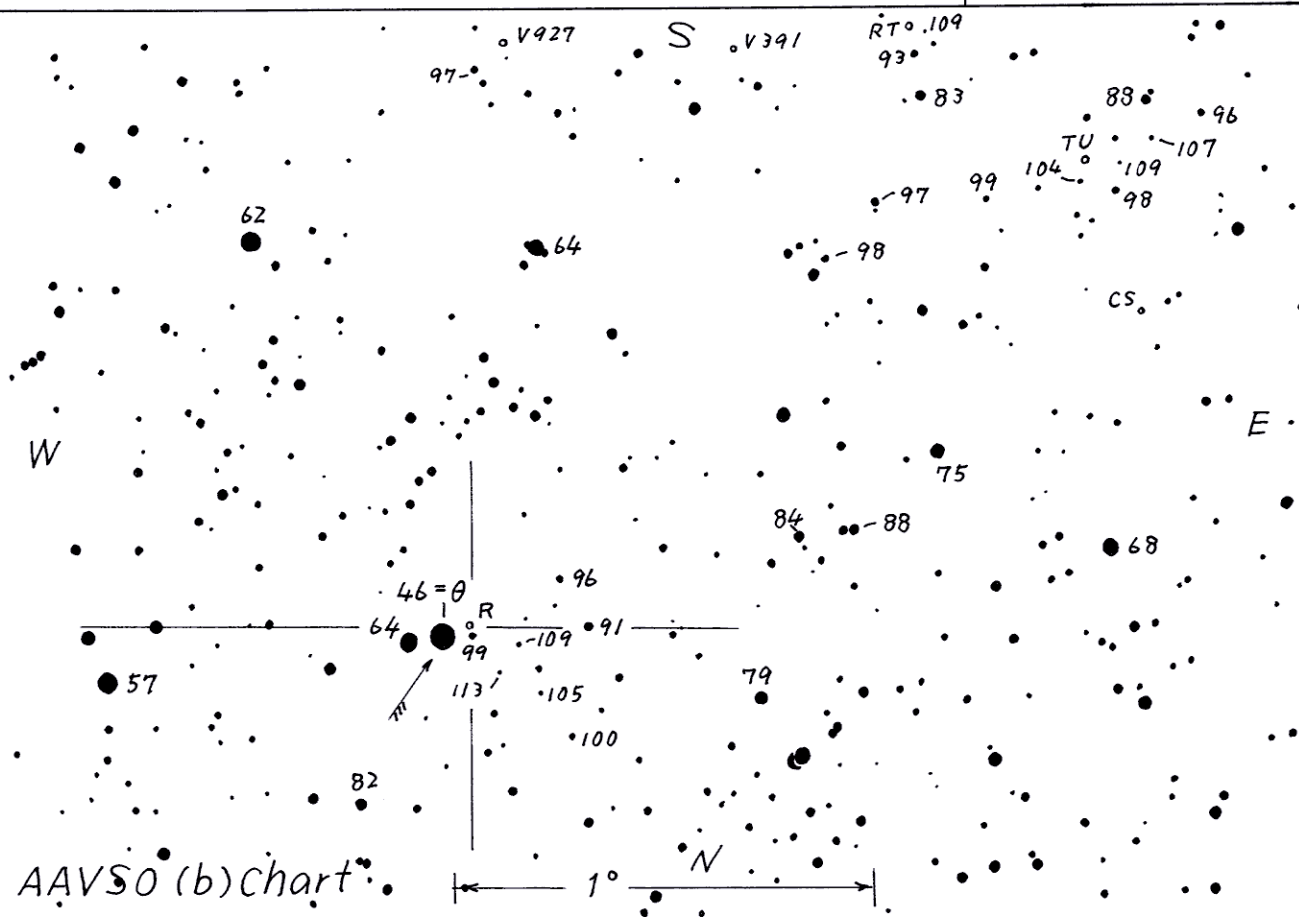
Magn. 6.2 ~ 14.6 V

Period 426.45 d

Type Mira

Spec. S2.5e ~ S6.9e

(2000) 19<sup>h</sup>36<sup>m</sup>50<sup>s</sup> + 50°12.0'



Drawn. by Y. Hirasawa 2003 Nov 18