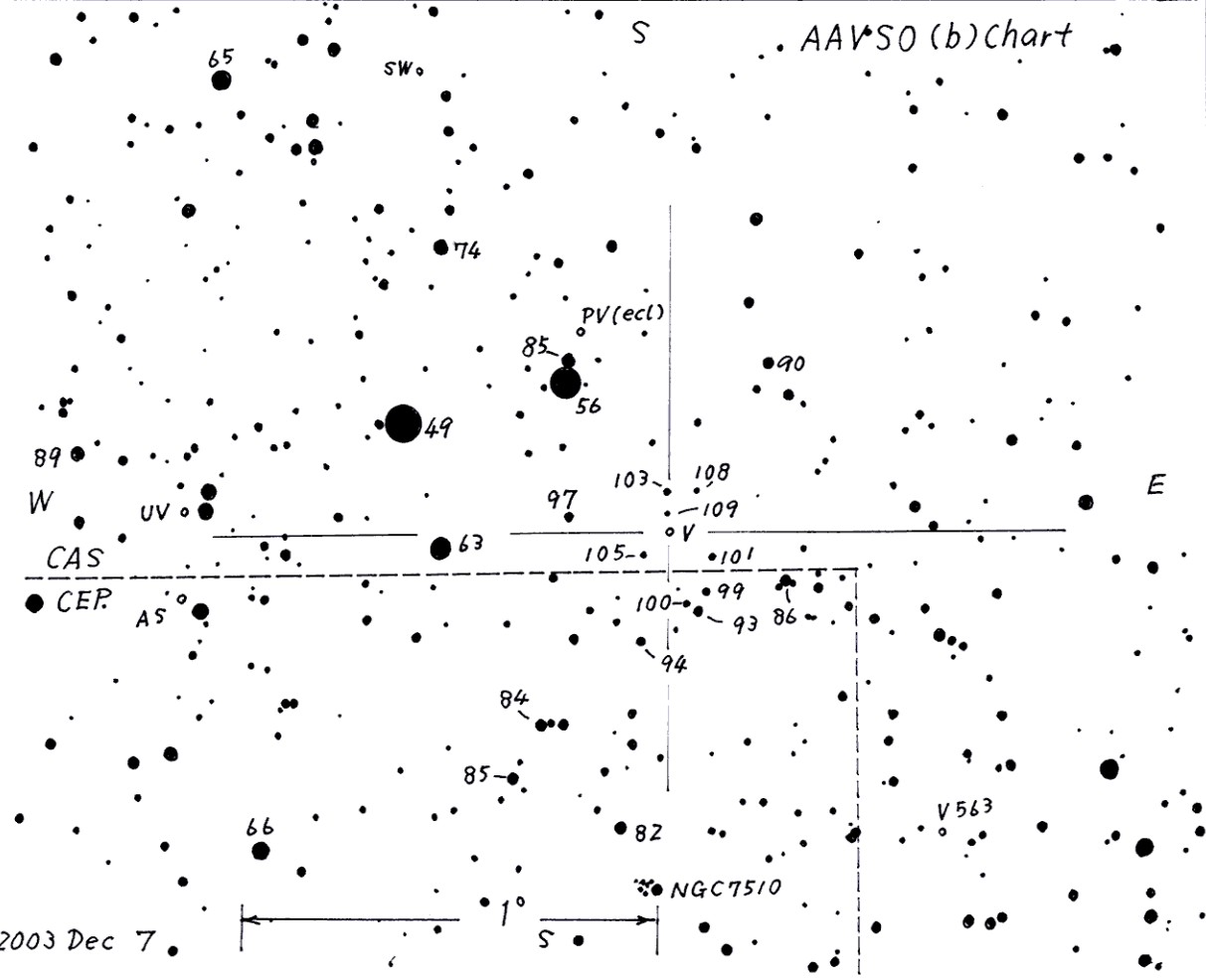


2307+59 V Cas (V Casiopeiae)  
 Magn. 7.3 ~ 13.3 V  
 Period 228.83 d  
 Type Mira  
 Spec. M5e ~ M8.5e

(2000) 23<sup>h</sup>11<sup>m</sup>40<sup>s</sup> +59°42.0'



- 2258+59 UV Cas RCB 10.6 ~ 11.4 V
- 2258+59B AS Cep Lb 9.7 ~ 10.7 V
- 2302+58 SW Cas DCep 9.3 ~ 10.3 V
- 2312+59 V563 Cas Mira 11.2 ~ 15.4 V 543 d

