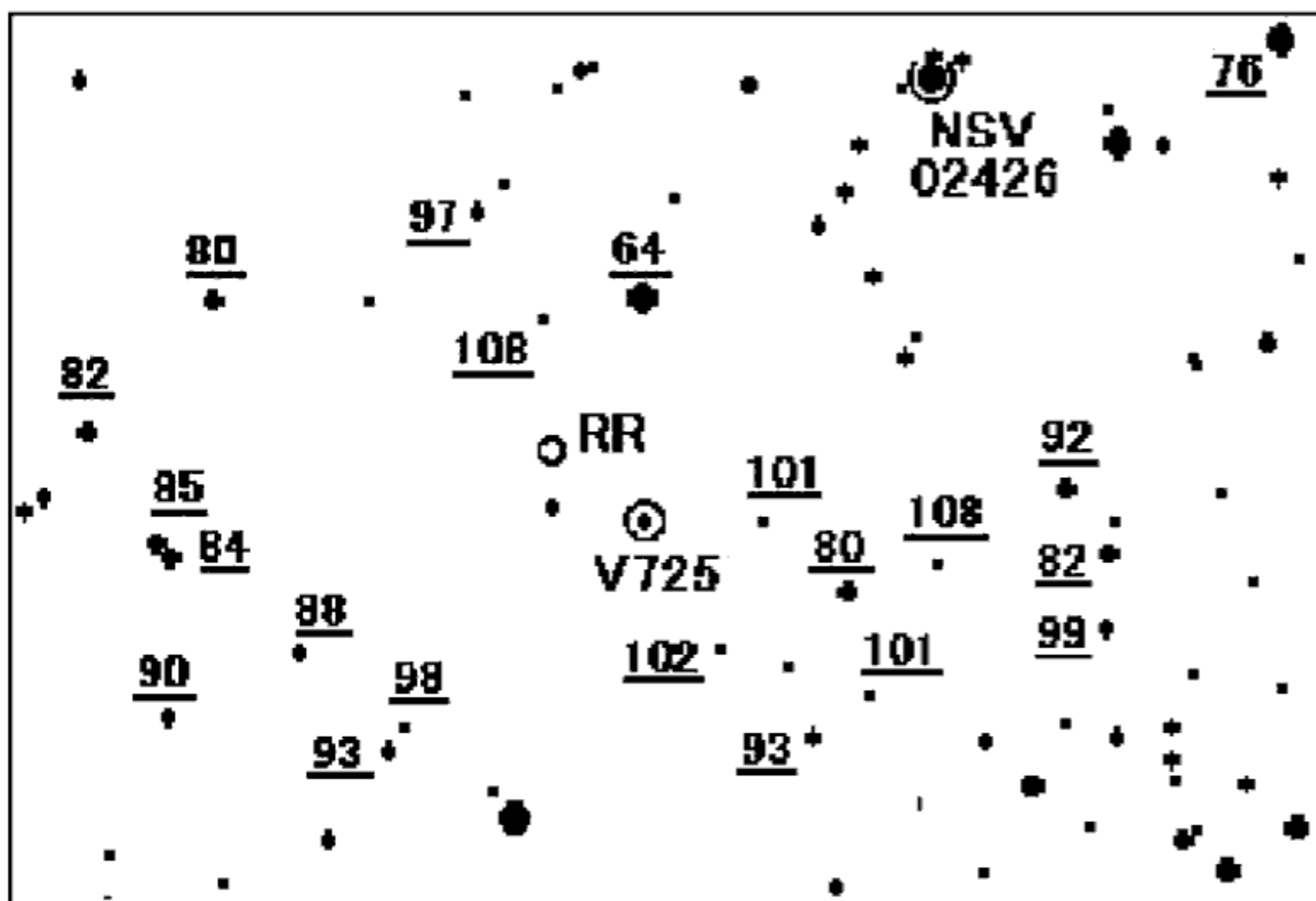
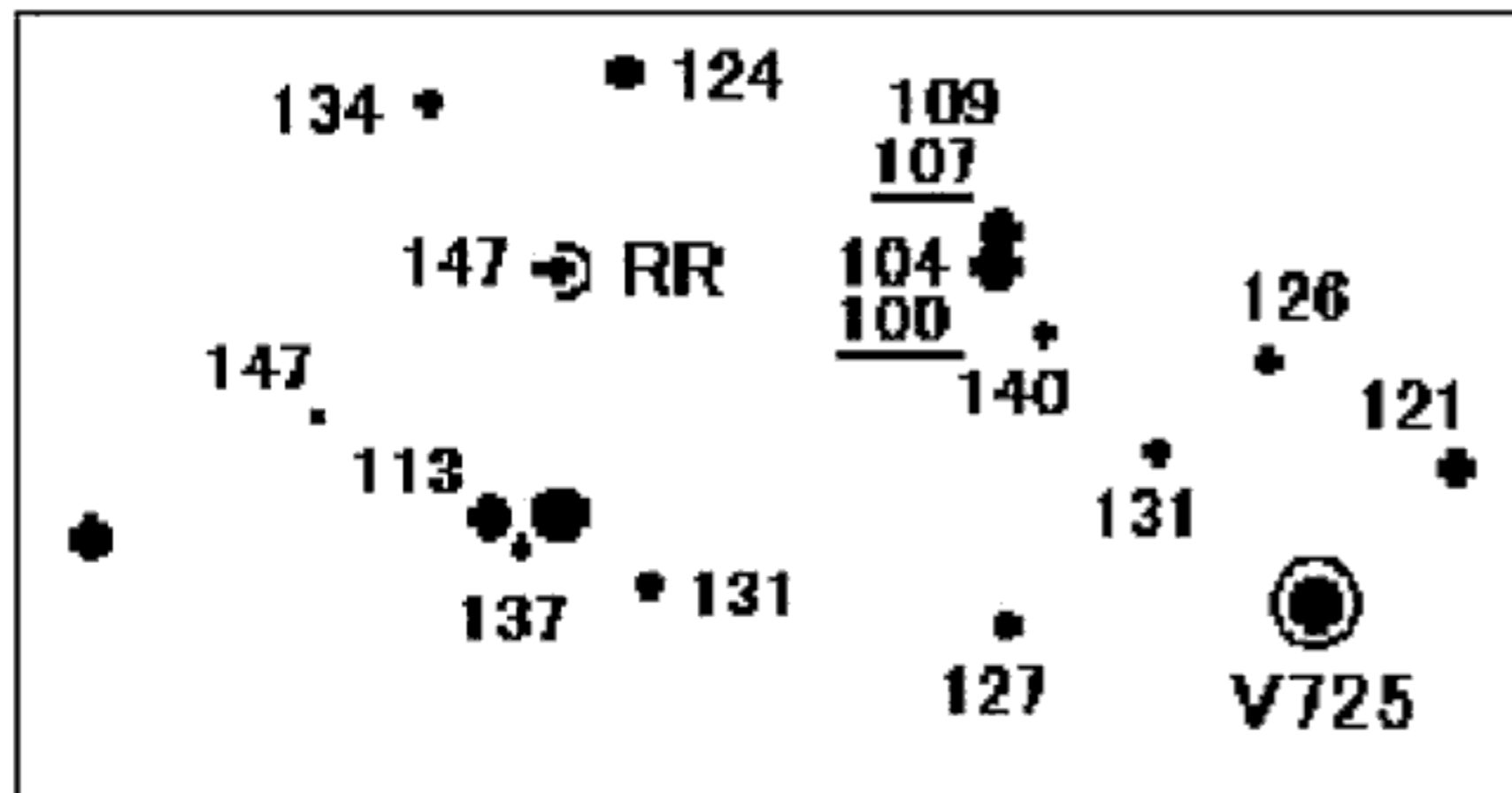
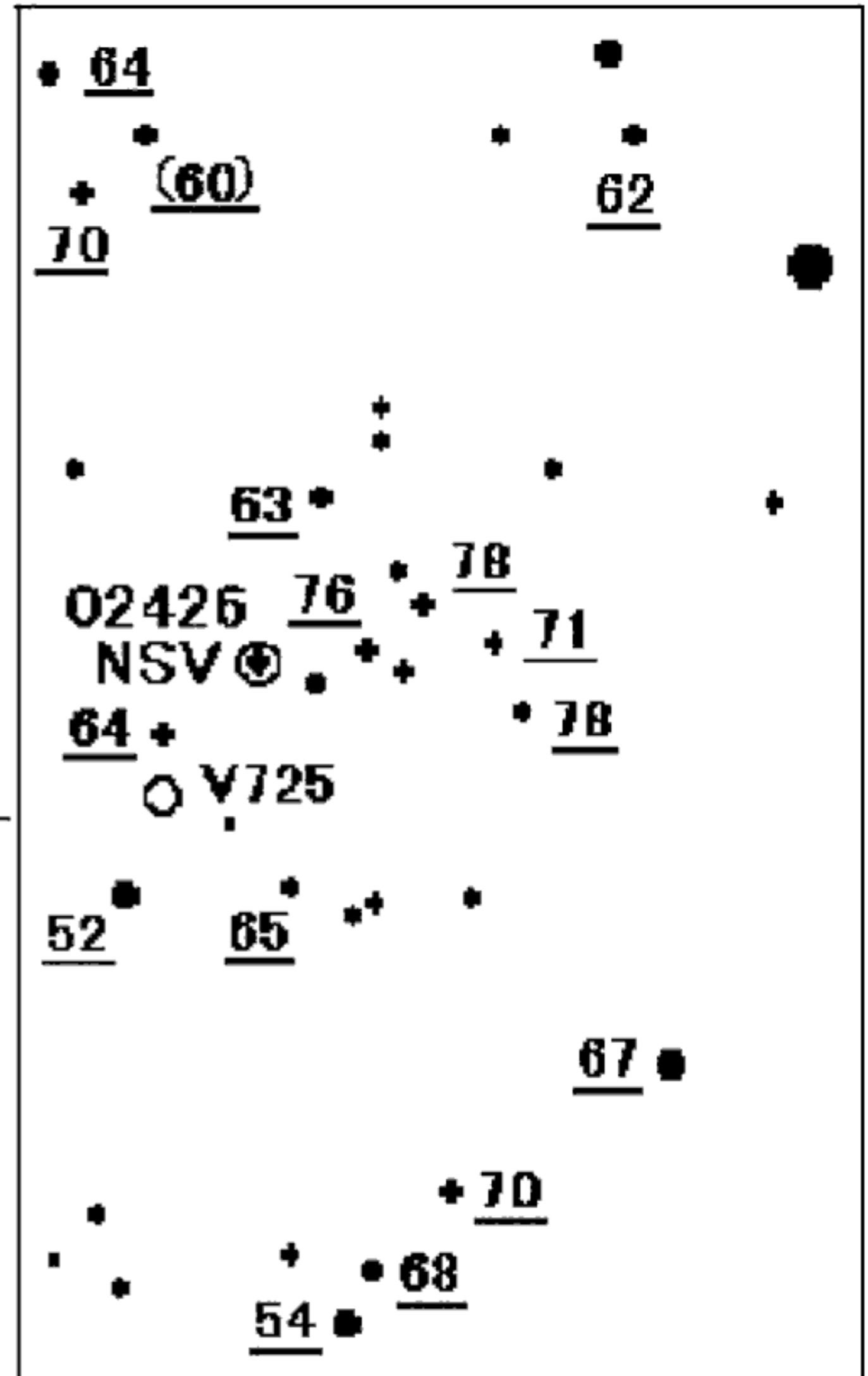
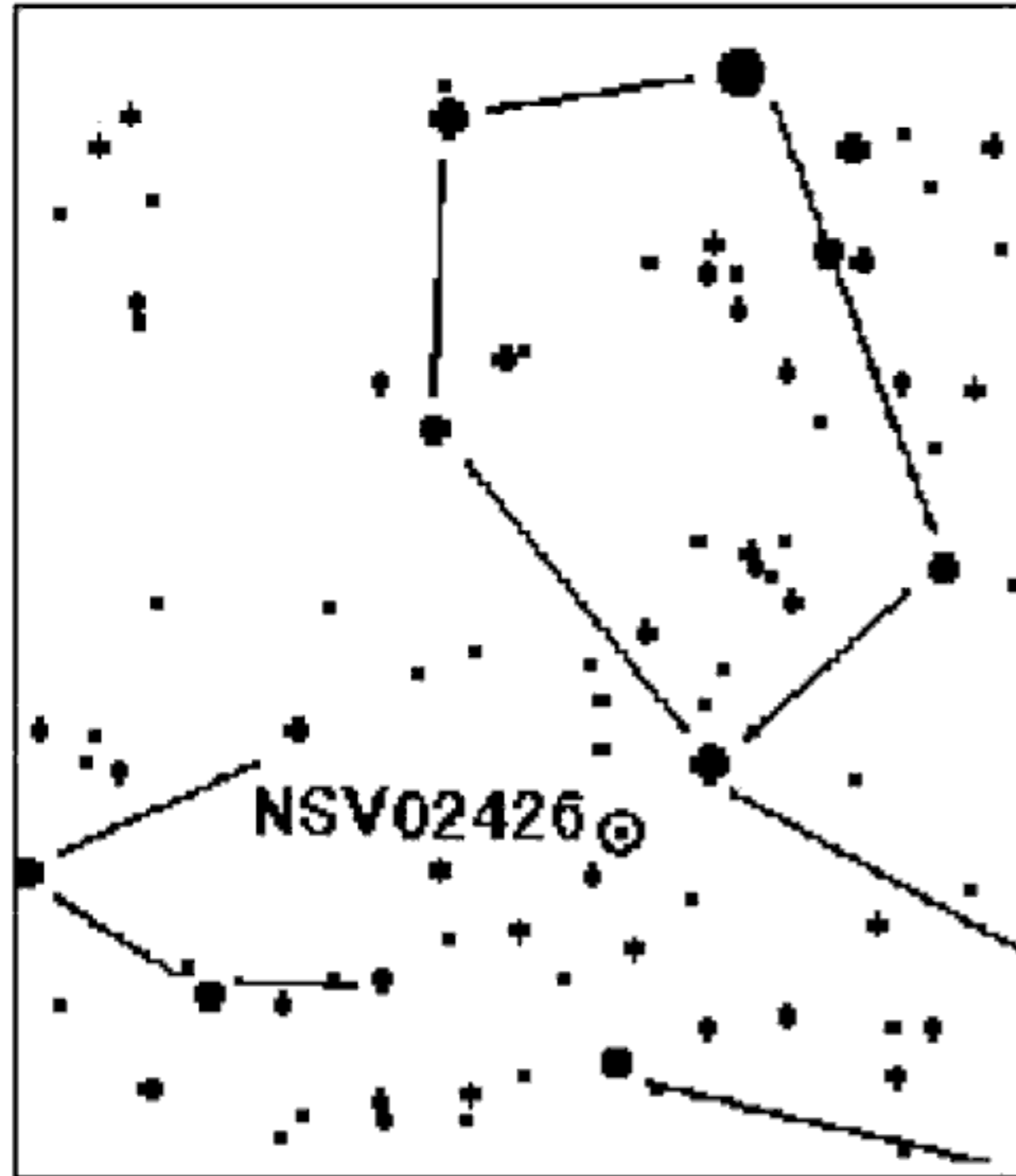


**V725 Tau** Type : XNGP Mag : 9.4 - 10.1p (GSC 8.5)  
 R. A. = 05h38m54s.5 Dec. = +26° 18' 56" (2000)

**RR Tau** INSA型 Mag : 10.2 - 14.3V

**NSV02426** ?型 Mag : 3.5 - 5.8B (GSC 5.8)



GSC光度  
 下線付きはH / T光度

*made by Wnt*